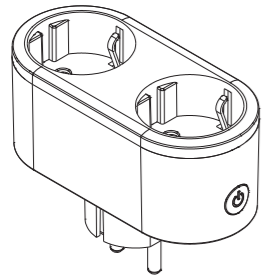
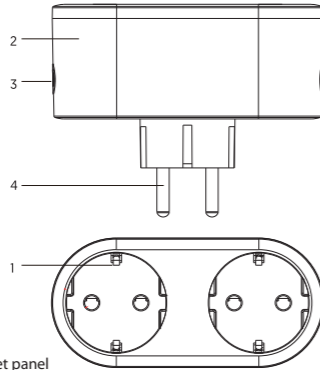




## SMART SOCKET INSTRUCTION



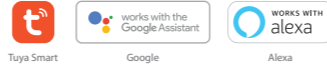
### Product con figuration .



- 1.Socket panel
- 2.Flame resistant material
- 3.ON/OFF Button
- 4.Power plug

### Specifications

- \*Max load: 16A
- \*Wireless type: Wi-Fi 2.4GHz
- \*Wireless standard: IEEE 802.11 b/g/n
- \*Energy monitoring, Eu. standard,
- \*Voice control with Amazon Alexa or Google Home;



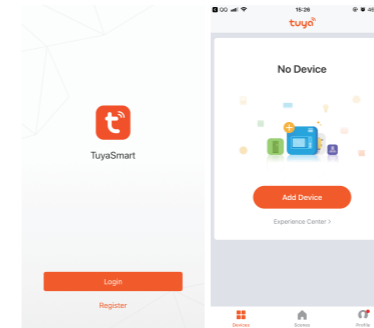
### Download App

- 1.Android phone:download "Tuya Smart"from Google Play.
- 2.Iphone:download"Tuya Smare"from App Store.



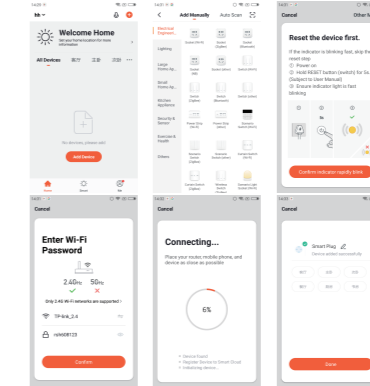
### Add Device

- 1.Run"TuyaSmart"from your smartphone desktop.
- 2.Register and login.



### Add Device

- "Add device", select device types as "Electrical Engineering", choose "Power Strip". Confirm indicator is flashing fast.
- Then enter your Wi-Fi password. Wait till the circle reach 100%. When it shows "Device added successfully", you can name your alarm and control it via APP.



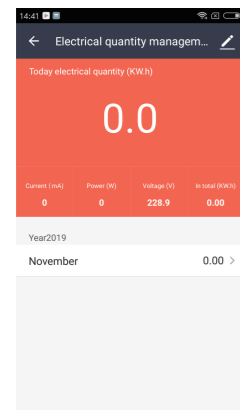
### Main Function

1. Click "Total Switch" to turn all sockets On/Off.
2. Click sockets or ports icon to control sockets or ports individually.

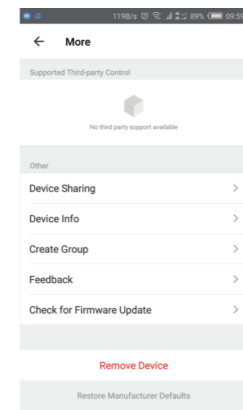
- a. Schedule
- b.Count-dwon
- c.Electric
- d. More setting



### Power energy monitor management

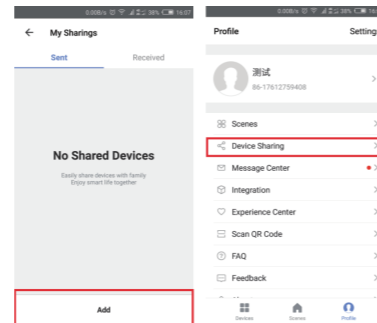


### More Setting



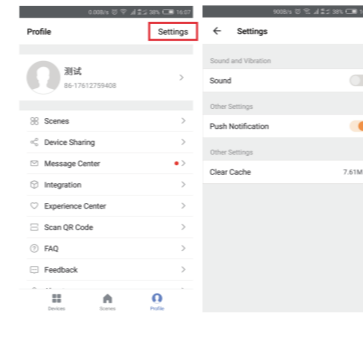
### Device Sharing

Device Sharing : Allow others to control the device by sharing device (note: you can delete the sharing in profile setting)



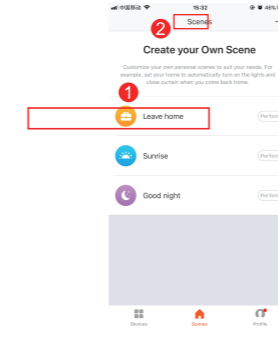
### Push Notification

Enable to turn of



### Customize Scenes

associate two devices to work to create your own scene



### LED State

Device Status	LED State
Smart Wi-Fi	LED will rapidly blink
AP mode	LED will slowly blink
be triggered	Blue once
Stop alarm	Blue once
Reset	Keep light blue for 4s, led stays off for around 2s,then it will be ready for configuration



Make Your Home Smarter